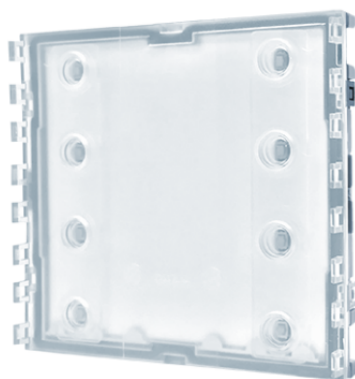


**UT9200****ULTRA MODULE FOR UT9211, UT9212 BUTTONS**

Call button module for Ultra entrance panel, compatible with all systems. With facility for 8 call buttons in professional-grade plastic given an anti-yellowing and anti-dulling treatment or in aluminium. For completion with 4 single buttons art. UT9211, UT9211M, UT9211FM (4 calls), 4 double buttons art. UT9212, UT9212M, UT9212FM (8 calls) or with caps art. UT9221, UT9221M, UT9222, UT9222M, UT9223, UT9223M. Automatic nameplate backlight switch-off during daytime hours via the twilight sensor for the paired audio or audio/video module. White nameplate lighting. Dimensions (L x H x D): 100 x 90 x 35 mm.

AWARDSDESIGN
MILANO



UT9200

ULTRA MODULE FOR UT9211, UT9212 BUTTONS

GENERAL DATA

Type	Modular
Height (inch) (in)	3.54
Width (inch) (in)	3.94
Depth (inch) (in)	1.38
Product color	Transparent
Flush-mounted	Yes, with a dedicated accessory
Wall-mounted	Yes, with a dedicated accessory

COMPATIBLE SYSTEMS

Audio/video Simplebus 2 with power supply art. 4888CU	Yes
Audio/video Simplebus 2 with power supply art. 1210/1210A	Yes
Audio Simplebus 2 with power supply art. 1210/1210A	Yes
Audio/video Simplebus 1	Yes
Audio Simplebus 1	Yes
ViP	Yes

ELECTRICAL CHARACTERISTICS

Type of power supply	Power supply from video door entry bus
Supply voltage	33VDC
Absorption in stand-by (W)	0.4
Maximum absorption (W)	0.4

HARDWARE FEATURES

Call type	Push-buttons
Type of buttons	Mechanical
Number of push-buttons (n°)	8
Backlight color	White, Off



UT9200

ULTRA MODULE FOR UT9211, UT9212 BUTTONS

SETTINGS

Backlight brightness	Yes
----------------------	-----

ENVIRONMENTAL AND COMPLIANCE FEATURES

Operating temperature (°F)	-13 ÷ 131
----------------------------	-----------

Operating humidity (RH max) (%)	25 ÷ 95
---------------------------------	---------

Environmental class	IV
---------------------	----

Certifications	RoHS II - 2011/65/UE (EN IEC 63000:2018), EMC 2014/30/UE (EN 61000-6-1:2007 , EN 61000-6-3:2007+A1:2011)
----------------	--

**UT9200****ULTRA MODULE FOR UT9211, UT9212 BUTTONS****ACCESSORIES****UT9223M****TRIPLE-HEIGHT ULTRA FULL METAL CAP**

"Full Metal version triple-height cap for Ultra entrance panel. Made with aluminium coating to increase resistance to impact and polymethyl methacrylate treated to increase resistance to UV rays while preventing yellowing and dulling."

UT9223**TRIPLE-HEIGHT ULTRA PLASTIC CAP**

"Triple-height cap for Ultra entrance panel. Made using polymethyl methacrylate given a treatment for resistance to UV rays while preventing yellowing and dulling."

UT9222M**DOUBLE-HEIGHT ULTRA FULL METAL CAP**

"Full Metal version double-height cap for Ultra entrance panel. Made with aluminium coating to increase resistance to impact and polymethyl methacrylate treated to increase resistance to UV rays while preventing yellowing and dulling."

UT9222**DOUBLE-HEIGHT ULTRA PLASTIC CAP**

"Double-height cap for Ultra entrance panel. Made using polymethyl methacrylate given a treatment for resistance to UV rays while preventing yellowing and dulling."

UT9221MW**FULL METAL ULTRA CAP, WHITE**

Full Metal version cap for Ultra entrance panel, colour white RAL9016. Made with aluminium coating to increase resistance to impact and polymethyl methacrylate treated to increase resistance to UV rays while preventing yellowing and dulling.

**UT9200****ULTRA MODULE FOR UT9211, UT9212 BUTTONS****ACCESSORIES****UT9212MW METAL DOUBLE ULTRA BUTTON, WHITE**

Metal version double button for Ultra entrance panel, colour white RAL9016. Made with aluminium trim to increase resistance to impact and polymethyl methacrylate treated to increase resistance to UV rays while preventing yellowing and dulling. Double nameplate (blank and with divider symbol) supplied. Easy nameplate replacement.

UT9211MW METAL SINGLE ULTRA BUTTON, WHITE

Metal version single button for Ultra entrance panel, colour white RAL9016. Made with aluminium trim to increase resistance to impact and polymethyl methacrylate treated to increase resistance to UV rays while preventing yellowing and dulling. Double nameplate (blank and with bell symbol) supplied. Easy nameplate replacement.

UT9221MB ULTRA FULL METAL CAP, BLACK

Full Metal version cap for Ultra entrance panel, colour black RAL9005. Made with aluminium coating to increase resistance to impact and polymethyl methacrylate treated to increase resistance to UV rays while preventing yellowing and dulling.

UT9212MB ULTRA DUAL METAL BUTTON, BLACK

Metal version double button for Ultra entrance panel, colour black RAL9005. Made with aluminium trim to increase resistance to impact and polymethyl methacrylate treated to increase resistance to UV rays while preventing yellowing and dulling. Double nameplate (blank and with divider symbol) supplied. Easy nameplate replacement.

**UT9200****ULTRA MODULE FOR UT9211, UT9212 BUTTONS****ACCESSORIES****UT9211MB ULTRA SINGLE METAL BUTTON, BLACK**

Metal version single button for Ultra entrance panel, colour black RAL9005. Made with aluminium trim to increase resistance to impact and polymethyl methacrylate treated to increase resistance to UV rays while preventing yellowing and dulling. Double nameplate (blank and with bell symbol) supplied. Easy nameplate replacement.

UT9221M FULL METAL ULTRA CAP

Full-Metal version of the cap for Ultra entrance panel. Made with an aluminium coating to increase resistance to impact and polymethyl methacrylate treated to increase resistance to UV rays while preventing yellowing and dulling.

UT9221 PLASTIC ULTRA CAP

Cap for Ultra entrance panel. Made using polymethyl methacrylate given a treatment increasing resistance to UV rays while preventing yellowing and dulling.

UT9212M DOUBLE METAL ULTRA BUTTON

Metal version of the double button for Ultra entrance panel. Made with aluminium trim to increase resistance to impact and polymethyl methacrylate treated to increase resistance to UV rays while preventing yellowing and dulling. Double nameplate (blank and with a divider symbol) included. Easy nameplate replacement.

**UT9200****ULTRA MODULE FOR UT9211, UT9212 BUTTONS****ACCESSORIES****UT9212FM DOUBLE FULL METAL ULTRA BUTTON**

Full-Metal version of the double button for Ultra entrance panel. Made with an aluminium coating to increase resistance to impact and polymethyl methacrylate treated to increase resistance to UV rays while preventing yellowing and dulling.

UT9212 DOUBLE ULTRA BUTTON

Double button for Ultra entrance panel. Made using polymethyl methacrylate given a treatment increasing resistance to UV rays while preventing yellowing and dulling. Double nameplate (blank and with a bell symbol) included. Easy nameplate replacement.

UT9211M SINGLE METAL ULTRA BUTTON

Single button for Ultra entrance panel. Made with aluminium trim to increase resistance to impact and polymethyl methacrylate treated to increase resistance to UV rays while preventing yellowing and dulling. Double nameplate (blank and with a bell symbol) included. Easy nameplate replacement.

UT9211FM SINGLE FULL METAL ULTRA BUTTON

Full-Metal version of the single button for Ultra entrance panel. Made with an aluminium coating to increase resistance to impact and polymethyl methacrylate treated to increase resistance to UV rays while preventing yellowing and dulling.

UT9211 SINGLE ULTRA BUTTON

Single button for Ultra entrance panel. Made using polymethyl methacrylate given a treatment increasing resistance to UV rays while preventing yellowing and dulling. Double nameplate (blank and with a bell symbol) included. Easy nameplate replacement.