

STI PROTECTIVE CABINETS



STI-7520OB



STI-7521OB

PRODUCT OVERVIEW

Multipurpose lockable cabinets with open backbox for remote annunciators, fire alarm control panels or other electronic products which require protection. Helps guard against vandalism (accidental or intentional) and misuse. Covers mount on the wall enabling the unit to be stored in a central location. The cabinets are available with a key or thumb lock and have an open backbox solution to cover previously mounted devices. They also have an additional eyelet for a secondary lock or safety seal.

HOW THEY WORK

Cabinets are constructed of a clear polycarbonate which allows the unit within to be highly visible and accessible. Operator has to unlock the unit and open the lid for access.

KEY FEATURES

General Information

- Clear UV-stabilized polycarbonate cover.
- Three year guarantee against breakage of polycarbonate in normal use.

Design

- Design allows visibility at any angle.
- Additional eyelet can be used for secondary padlock or safety seal.
- Covers have an open backbox.
- Designed with an open back box to place over an already mounted device.

Construction

- Constructed of tough polycarbonate – the same material used in football helmets.

Installation

- External mounting tabs.
- Complete with mounting hardware.
- Typical working properties of polycarbonate are -40° to 250°F (-40° to 121°C).
- Tamperproof mounting screws available.

Options

- Includes thumb lock or key lock.

STI Protective Cabinets

Dimensions and Technical Information

MODELS AVAILABLE

- STI-75200B** Protective Cabinet with open backbox - key lock
- STI-75210B** Protective Cabinet with open backbox - thumb lock

Accessories

- KIT-H18054** Additional keys (2) #CH751
- KIT-82** #8 x 1.5" snake eye tamper resistant stainless steel screw (qty. 4)
- KIT-19038** Snake eye bit

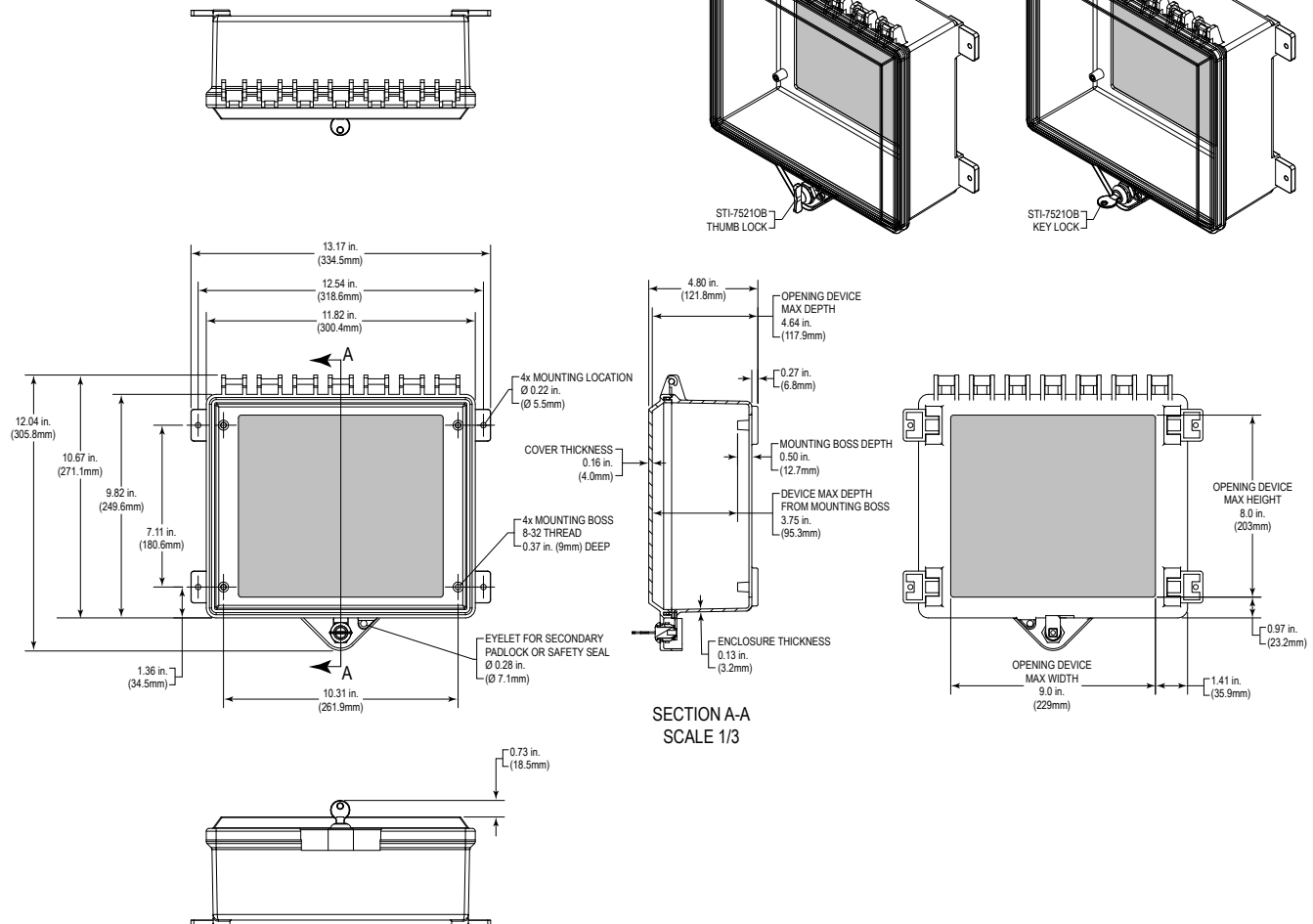
APPROVALS & WARRANTY

WARRANTY

Three year guarantee against breakage of polycarbonate in normal use.

Dimensions

	STI-75200B / STI-75210B		
	H	W	D
External Dimensions:	12.04 in. (306mm)	13.17 in. (335mm)	4.80 in. (122mm)
Internal Dimensions:	8.0 in. (203mm)	9.0 in. (229mm)	4.64 in. (117mm)



SECTION A-A
SCALE 1/3



Safety Technology International

2306 Airport Road
Waterford, MI
48327, USA
info@sti-usa.com
www.sti-global.com
Tel: 248-673-9898

Taylor House
34 Sherwood Rd., Bromsgrove,
Worcs., B60 3DR, England

info@sti-emea.com
www.sti-global.com
Tel: +44 (0) 1527 520 999

Unit 7A Lockheed Avenue
Airport Business Park
Waterford X91 HWF2 Ireland