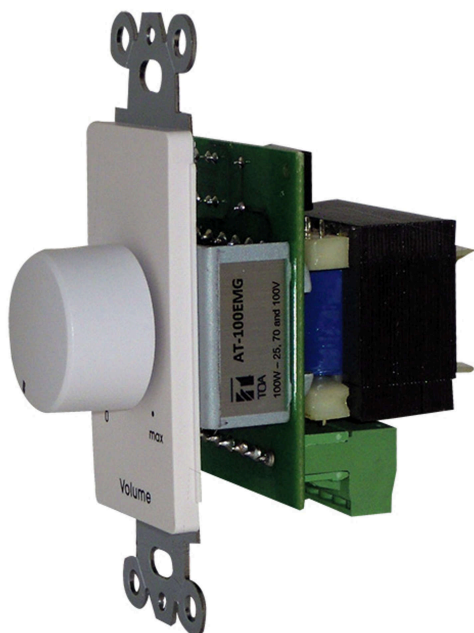


## AT-100EMG-AM

100W INLINE EMERGENCY VOLUME CONTROL, WH



AT-100EMG volume control attenuator provides precise level adjustment of single or multiple speaker lines. Available in 100W with a Decora-style wall plate. AT-100EMG is equipped with a 24 VDC @ 15mA relay for applications that require emergency and paging signals to bypass/override the attenuator.

### Key features

## Specifications

Input Capacity	100W
Attenuation	13 steps (0dB, -3dB, -6dB, -9dB, -12dB, -15dB, -18dB, -21dB, -24dB, -27dB, -30dB, -33dB, OFF)
Override Voltage	24 VDC @ 15mA
Cable Requirements	14 Gauge
Operating Temperature	-10 °C to +50 °C
Finish	White plate & sub-plate / Decora-style
Dimensions	Plate width: 69.85 mm (2.75")Plate Height:114.30 mm (4.5")53.97 (D) x 63.5 (H) x 47.62 (W) mm (2.125" x 2.5" x 1.875")