

BS-1034S

WALL MOUNT SPEAKER



The BS-1034S can be installed easily on the wall with help of the plug-in speaker receptacle.

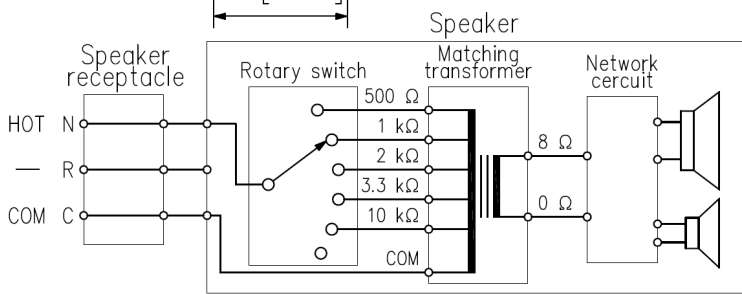
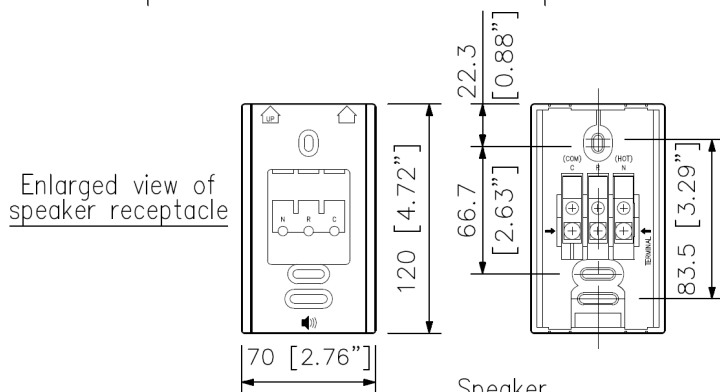
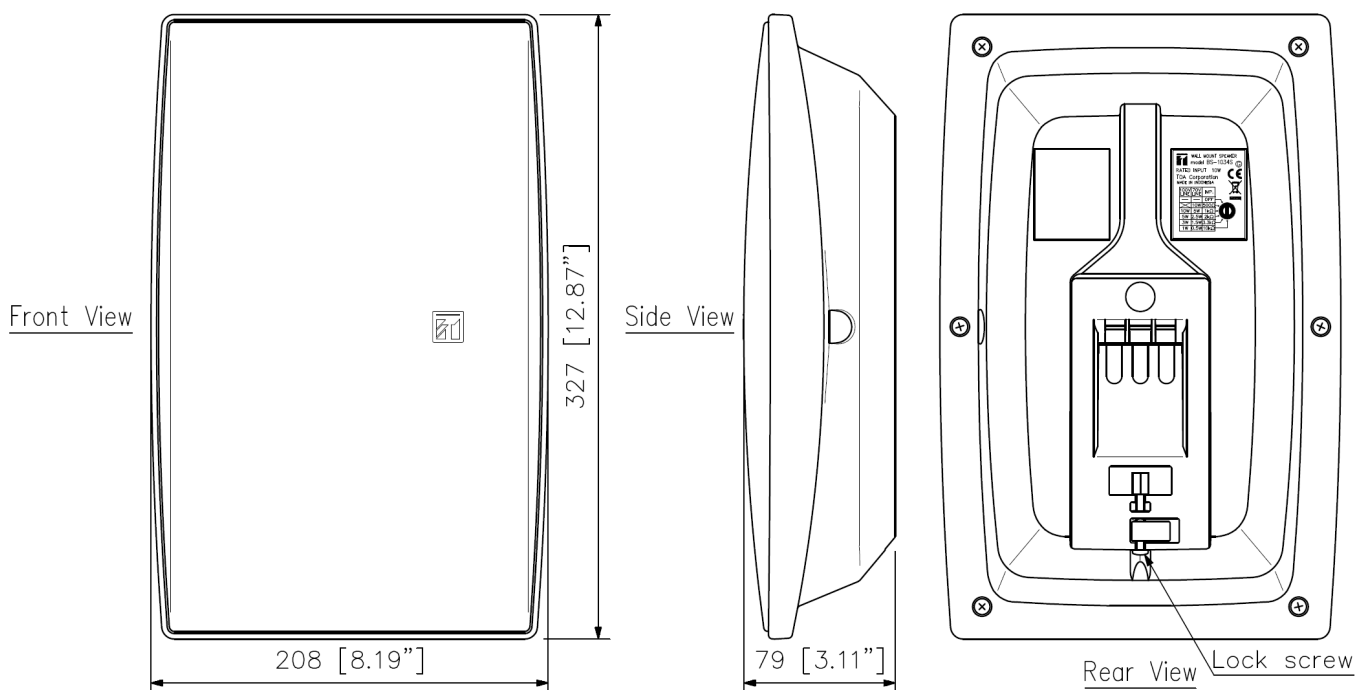
Key features

- 2-way speaker
- Easy and quick installation
- Attractive design based on the golden ratio
- Input impedance selector with rotary switch
- Fire resistant according to UL 94-V0

Specifications

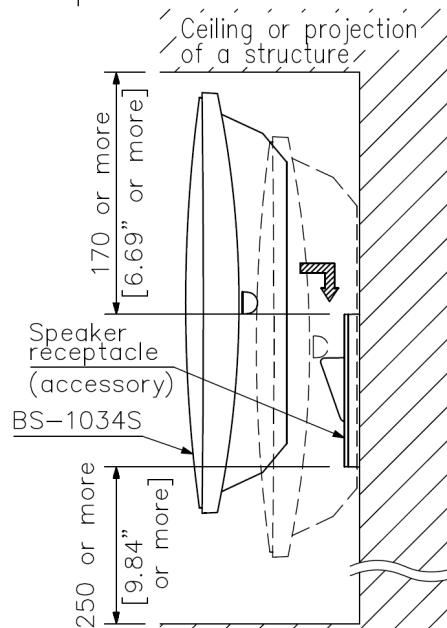
Rated Input	10 W
Rated Impedance	100 V line: 1 k Ω (10 W), 2 k Ω (5 W), 3.3 k Ω (3 W), 10 k Ω (1 W) 70 V line: 500 Ω (10 W), 1 k Ω (5 W), 2 k Ω (2.5 W), 3.3 k Ω (1.5 W), 10 k Ω (0.5 W)
Sensitivity	90 dB (1 W, 1 m)
Frequency Response	120 Hz - 20 kHz
Speaker Component	Low frequency: 12 cm (5") cone-type
Input Terminal	M4 screw terminal, distance between barriers: 11 mm (0.43")
Finish	Enclosure: HIPS resin (fire resistant grade UL94 V-0 or its equivalent), silver Net: Steel plate, silver, paint
Dimensions	208 (W) x 327 (H) x 79 (D) mm (8.19 x 12.87" x 3.11")
Weight	1.4 kg (3.09 lb)
Included Accessories	Speaker receptacle ...1, Wall mounting screw ...2

Dimensions



(Factory-preset wiring)
Note: Never connect to the 500 Ω in a 100 V line system.
Wiring Diagram

UNIT:mm



Note: As a force of approx. 18 kg (39.68 lb) is applied to the speaker receptacle at the time of speaker installation, attach it in a location durable enough to withstand the force.

Installation view

A&E specifications

The speaker unit shall combine a 5" (12cm) cone type low frequency speaker with a balanced dome-type high frequency speaker. The unit shall be capable of wall mounting with a supplied plug-in speaker receptacle accessory. The input connector shall be an M4 screw terminal, with an 11 mm distance between barriers.

The speaker impedance shall be 1kohm (10W), 2kohm (5W), 3.3kohm (3W) or 10kohm (1W) for a 100V line, and 500ohm (10W), 1kohm (5W), 2kohm (2.5W), 3.3kohm (1.5W) or 10kohm (0.5W) for a 70V line. The output sound pressure level at a distance of 1m with a 1W input level applied shall be 90 dB SPL. The speaker shall have a frequency response of 120 – 20,000Hz (-20dB). The speaker enclosure shall be constructed of fire resistant HIPS resin. The grille shall be constructed of surface-treated steel plate net. The speaker shall be available in silver color. The unit shall have dimensions of 210 (W) x 330 (H) x 80 (D) mm (8.27" x 12.99" x 3.15"), and a weight of 1.4 kg (3.09 lbs.).

The speaker shall be a TOA model BS-1034S