

CA-115

MOBILE AMPLIFIER



The CA-115 is a 1-DIN size unit 15 W car amplifier designed for use with a 12 V battery car.

Key features

- Mobile amplifier for easy installation in vehicles
- DC operation from 12 V battery
- Rated output 15 W, 30 W or 60 W
- 2 MIC inputs
- AUX input for CD player, radio, etc.
- Unidirectional dynamic microphone with talk switch
- Front pause function
- DIN size, easy in-dash installation
- Rugged construction

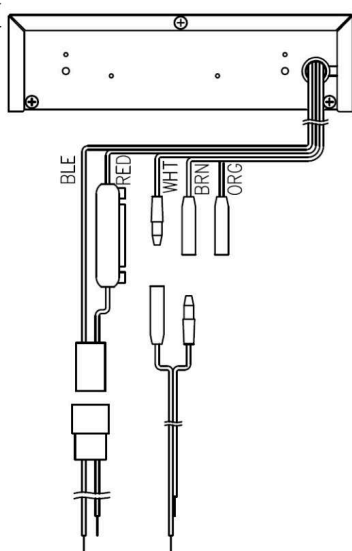
Specifications

Power Source	Standard voltage: 14 V DC Usable voltage: 10 - 16 V DC (12 V battery used)
Power Consumption	3 A or less at rated output
Rated Output	15 W
Output Impedance	4 Ω (BRN), 8 Ω (ORG), Common (WHT) Changeable by changing lead wire connections
Distortion	Less than 5% (at 1,000 Hz rated output)
Frequency Response	100 - 10,000 Hz
Input	Mic1, 2: 600 Ω , 4 mV, phone jack Aux : 10 k Ω , 500 mV, phone jack
Finish	Front panel: ABS resin, black Case : Zinc plated steel sheet
Dimensions	178 (W) x 50 (H) x 132 (D) mm (Mounting device excluded)
Weight	900 g
Included Accessories	Microphone holder 1, Mounting bracket 1, Mounting screw 1set, Fuse (4 A) 1, Connection cord 1set
Accessory Microphone	Unidirectional dynamic type with talk switch Impedance: 600 Ω Sensitivity : -53 dB (1 kHz, 0 dB = 1 V/Pa)

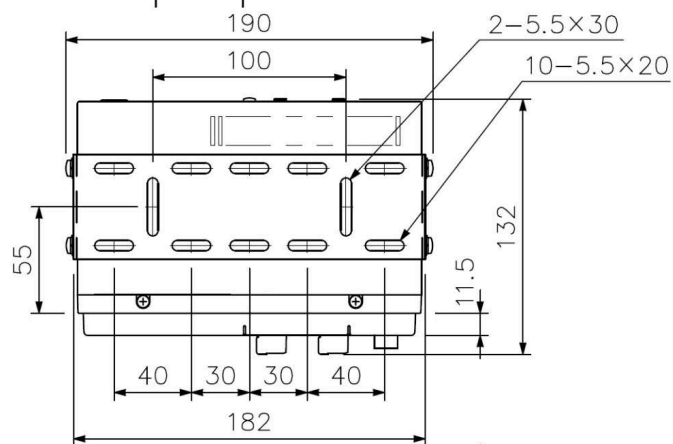
Dimensions

■ APPEARANCE

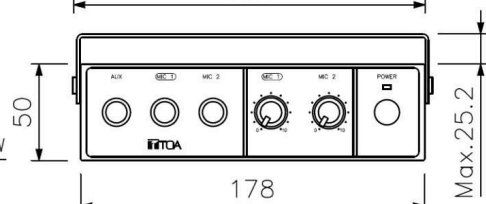
Rear View



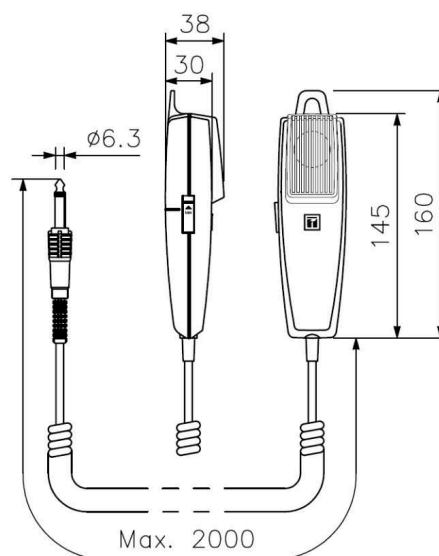
Top View



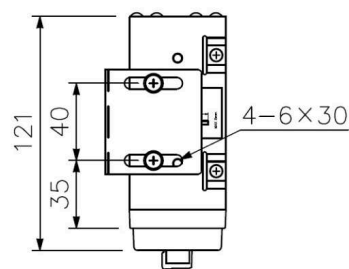
Front View



UNIT:mm SCALE:1/4



Accessory microphone (1/5)



Side View