



EVRC-IP

LIFT CONTROLLER

Description

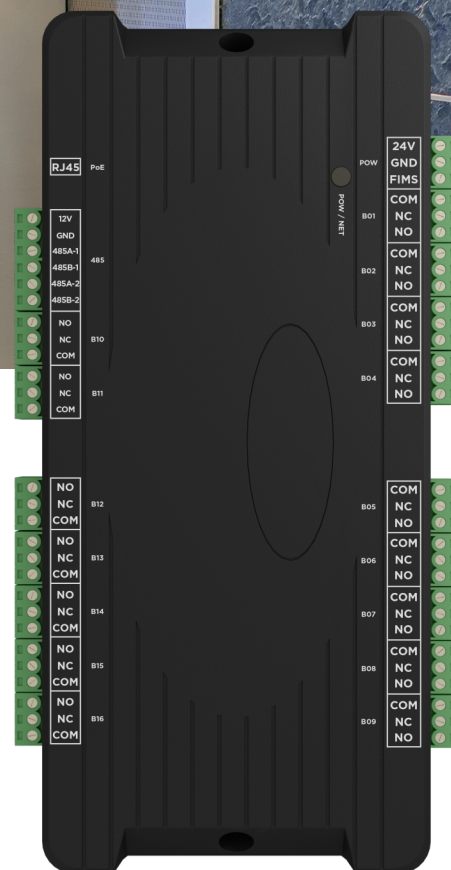
The controller is designed to be integrated into the elevator system by connecting EVRC-IP dry contacts to the elevator controller contacts across floors.

Up to 16 floors with normally open or normally closed contact types can be connected to one controller.

The module has support for PoE power and allows you to organize access to the elevator car when calling from the call panel or when presenting a contactless card.

The module has Ethernet interaction interface. On this interface, the module receives information about the raised card or the entered code, on the basis of which gives different access rights to use the elevator.

You can also connect fire alarm contacts to the controller to lock the elevator in case of fire.



Specifications

Rated voltage	POE support
Rated power	7 W
Standby power	1 W
Working temperature	-40 — +75° C
Storage relative humidity:	20% — 93%
IP Degree	IP30
Max number of modules per system	98

Connection scheme

Here is a diagram of the module with the designation of contacts.

To connect the relay contacts of each floor you need to use the contacts **MA** and **COM**.

On the main board, near each port there is a three- pin connector.

If you want the relay to be in the position **N.C.** after turning off the power, connect terminals 1 and 2.

If you want the relay to be in the **N.O.** after power on, connect terminals 3 and 2.

RJ45			24V		
RV			GND		
GND			FIMS		
485A-1	BUT1		COM		
485B-1			AU		
485A-2	BUT2		MA		
485B-2			COM		
MA			AU		
AU	BUT10	BUT3	MA		
COM			COM		
MA	BUT11	BUT4	AU		
AU			MA		
COM			COM		
MA			AU		
AU	BUT12	BUT5	MA		
COM			COM		
MA			AU		
AU	BUT13	BUT6	MA		
COM			COM		
MA	BUT14	BUT7	AU		
AU			MA		
COM			COM		
MA	BUT15	BUT8	AU		
AU			MA		
COM	BUT16	BUT9	COM		
MA			AU		
AU			MA		
COM			COM		