

F-2000BTWP

SPEAKER SYSTEM



The F-2000 Series Speaker are compact two-way speaker systems designed for high efficiency, wide range, and high power input handling capability. These speaker systems can be installed in a manner ideal for the location and intended application. The F-2000BTWP features a water-proof design (splash-proof type meeting IPX4 standard), so that it can be permanently installed outdoors.

Key features

- Compact wide-dispersion speaker
- Up to 180 W continuous program (F-2000B / F-2000W)
- Dispersion angle of 110° x 100°
- Easily mountable 80° x 80° horn adapter for increased dispersion control included
- 2-way speaker with high quality 20 cm woofer and balanced dome tweeter
- Paintable
- Covered rear-mounted terminal block (WP version)

Specifications

Enclosure	Bass-reflex type
Rated Input	60 W
Rated Impedance	100 V line: 170 Ω (60 W), 330 Ω (30 W), 670 Ω (15 W), 3.3 k Ω (3 W) 70 V line: 83 Ω (60 W), 170 Ω (30 W), 330 Ω (15 W), 670 Ω (7.5 W), 3.3 k Ω (1.5 W)
Sensitivity	92 dB (1 W, 1 m) at installation in 1/2 free sound field 93 dB (1 W, 1 m) at installation in 1/2 free sound field (with horn adapter)
Frequency Response	65 Hz - 20 kHz, -10 dB at installation in 1/2 free sound field
Crossover Frequency	2.5 kHz
Directivity Angle	Horizontal: 110°, Vertical: 100° Horizontal: 80°, Vertical: 80° (with horn adapter)
Speaker Component	Low frequency: 20 cm (8") cone-type High frequency: 25 mm (1") dome tweeter
Input Terminal	Push-in terminal
Water Protection	IPX4
Operating Temperature	-10 °C to +50 °C (14 °F to 122 °F)
Finish	Enclosure: HIPS, black Punched net: Surface-treated steel plate, black, anticorrosive paint Joint bracket, wall bracket: Stainless steel (SUS304), t2.0 Speaker bracket: Die-cast aluminum, black, paint
Dimensions	244 (W) x 373 (H) x 235 (D) mm (9.61" x 14.69" x 9.25")
Weight	7.4 kg (16.31 lb) (including the supplied brackets)
Included Accessories	Speaker bracket x 1, Joint bracket x 1, Wall bracket x 1, Bracket fixing screw x 1 set, Horn adapter x 1, Horn adapter mounting screw x 4, Terminal cover x 1, Terminal cover mounting screw x 4
Optional Accessories	Speaker mount bracket: SP-131, YS-60B

Note: Bolts and nuts for mounting the bracket to the wall or ceiling are not included. Prepare them separately.

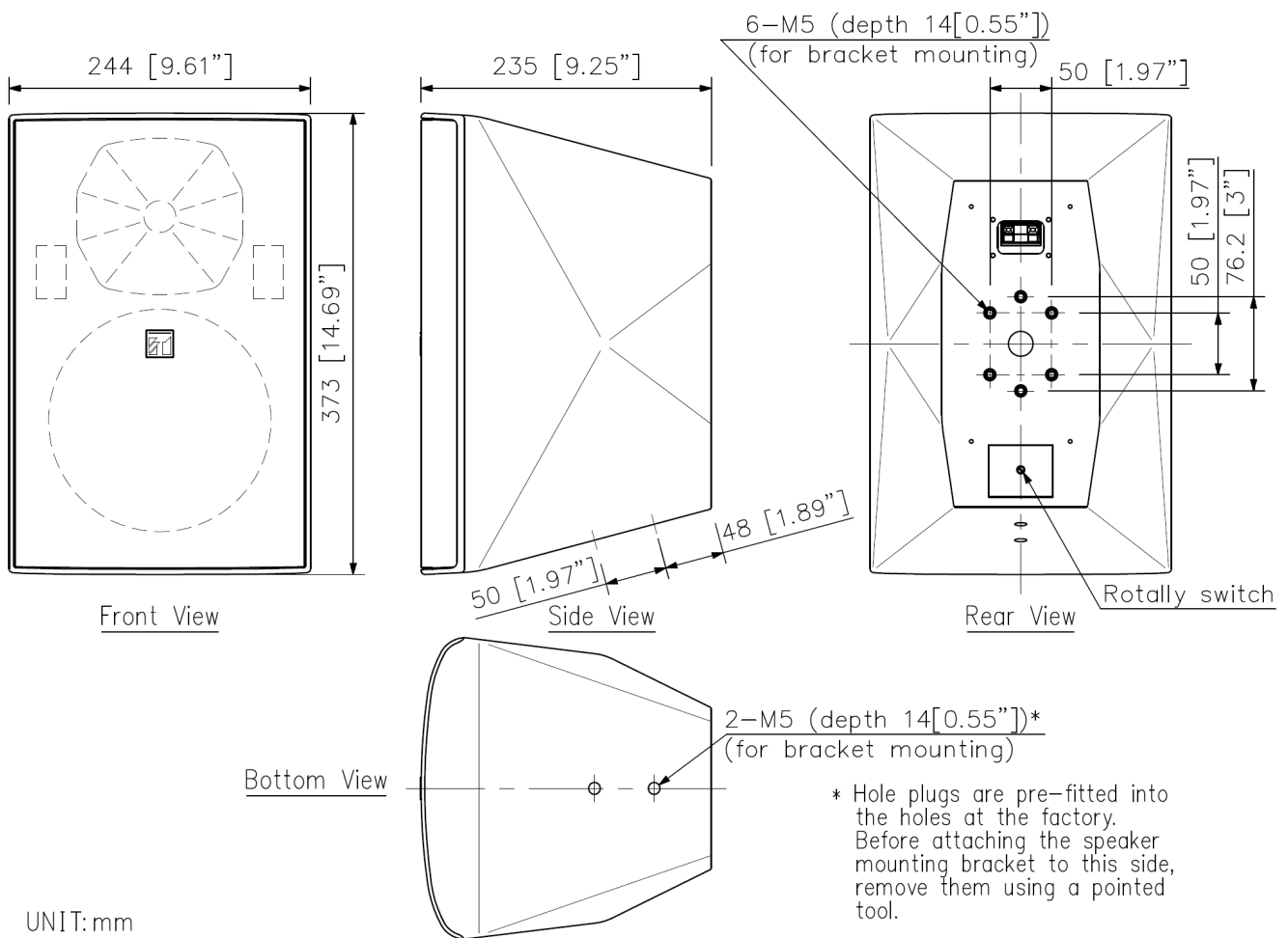
Avoid installing the speaker in locations close to the seashore or in indoor swimming facilities that are not well ventilated.

In such locations the bracket may be vulnerable to corrosion, eventually allowing the speaker to fall resulting in personal injury.

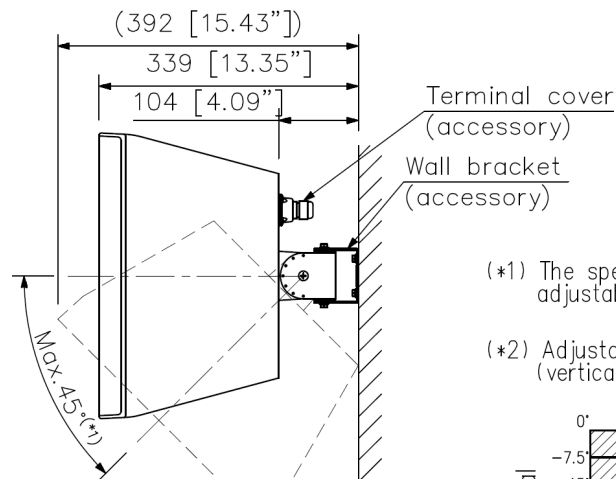
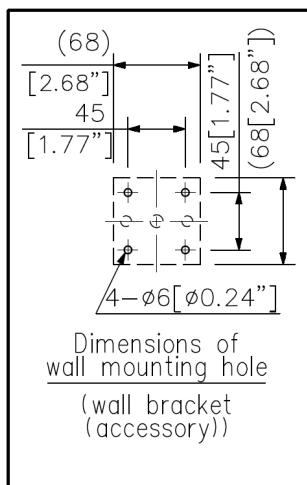
Caution on installation

Do not install the F-2000BTWP at places where it is likely to be corroded such as bath room, indoor pools, or seaside.

Dimensions

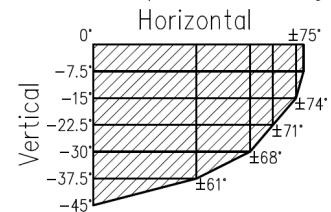


Dimensions



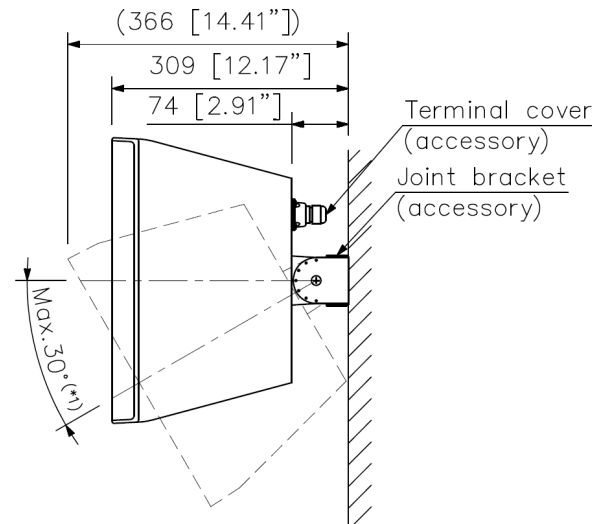
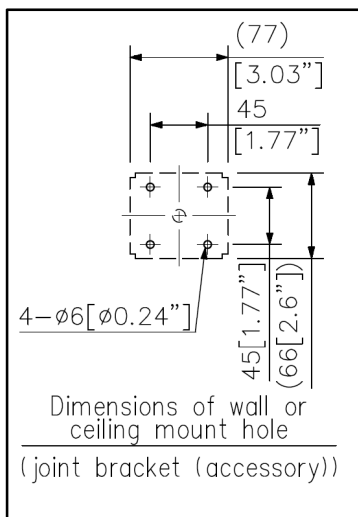
(*1) The speaker vertical angle adjustable in 7.5° steps.

(*2) Adjustable angle (vertical speaker mounting)

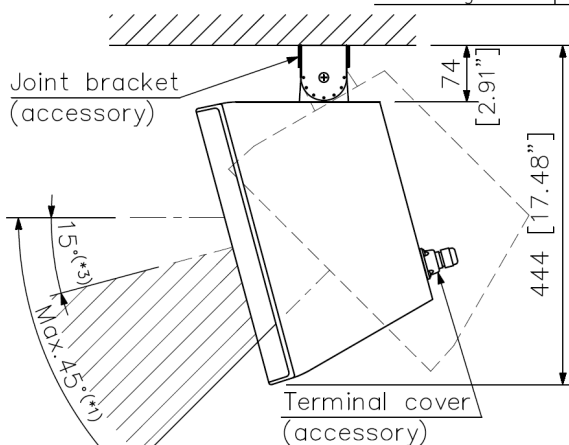


Up to 75° left or right is adjustable in a horizontal direction. (*2)

Wall mounting example



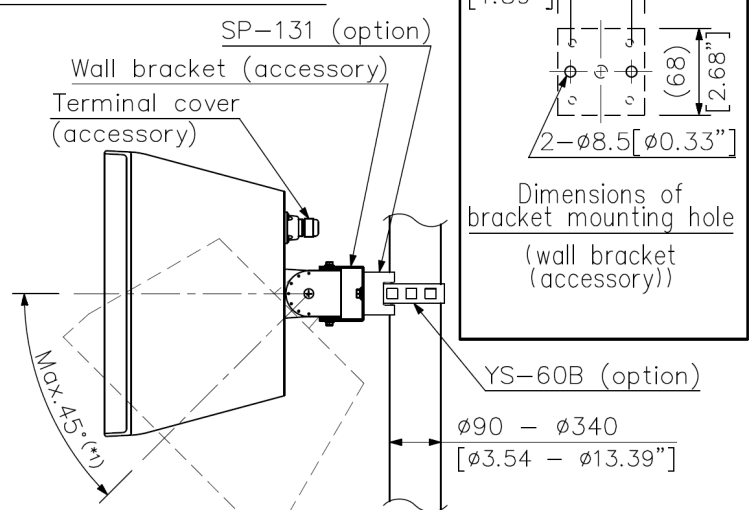
Only the vertical angle is adjustable.
Mounting the speaker close to a wall surface



(*3) Adjust the speaker angle within the downward range of 15° to 45°. (The speaker faces 15° downward when bracket mounting to a horizontal surface.) The speaker angle is adjustable in 7.5° steps in a vertical direction only.

Ceiling mount example

(Only the vertical speaker mounting is allowed.)



Up to 90° left or right is adjustable in a horizontal direction. (*2)

Pole mounting example

(Only the vertical speaker mounting is allowed.)

A&E specifications

The speaker shall be a two-way bass reflex enclosure suitable for ceiling or wall mounting. The low frequency component shall be a 20 cm (8") cone-type woofer. The high frequency component shall be a 25 mm (1") dome tweeter. For clear, wide-area sound coverage, the speaker shall include 110° (H) x 100° (V) wide dispersion-angle high frequency horn, plus an easily added 80° (H) x 80° (V) dispersion angle horn adapter for tighter dispersion control.

The rated input shall be 60 W. The speaker shall include a transformer having multiple taps (3 W, 15 W, 30 W, 60 W at 100 V and 1.5 W, 7.5 W, 15 W, 30 W, 60 W at 70 V) adjustable via the rear of the enclosure. The sensitivity at a distance of 1m with 1 W input level applied shall be 92 dB and 93 dB using the horn adapter. The speaker shall have a frequency response of 65 – 20kHz.

The speaker enclosure shall be constructed of HIPS resin. The speaker shall have an IEC 529 splash-proof rating of IPX4. The speaker shall have an operating temperature of -10° C to +50° C (14° F to 122° F). The speaker shall be available in white or black, and also be repaintable. The grille shall be a punched net, surface-treated steel plate with anticorrosive paint. Brackets for speaker-stand, wall and ceiling installation shall be included, and there shall be also optionally available brackets for more demanding installation venues.

The unit shall be compact and lightweight with dimensions of 244 x 373 x 235 mm (9.61" x 14.69" x 9.25") and a weight of 7.4 kg (16.31 lbs.).

The speaker shall be TOA model F-2000BTWP/F-2000WTWP.

The pole mount brackets shall be the SP-131 and YS-60B.

The subwoofer shall be the FB-100 or FB-120B/W.