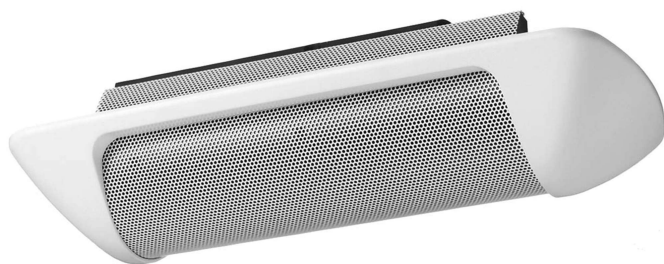


H-1 EX

SPEAKER SYSTEM



The H-1 is a cylinder-shaped, small flush-mount 2-way speaker that ensures quality sound reproduction. The mounting angle for its enclosure can be adjusted for up to 90 degrees.

Key features

- Sleek and attractive 2-way design speaker
- Ferrofluid-cooled balanced dome tweeters and neodymium magnet cone woofers
- Narrow coverage area allows a controlled sound
- Sound direction can be adjusted within 90°
- Built-in transformer allows both high and low impedance
- High power handling
- Easy installation in standard electrical gang boxes
- Fire-rated ABS enclosure (UL 94-V0)

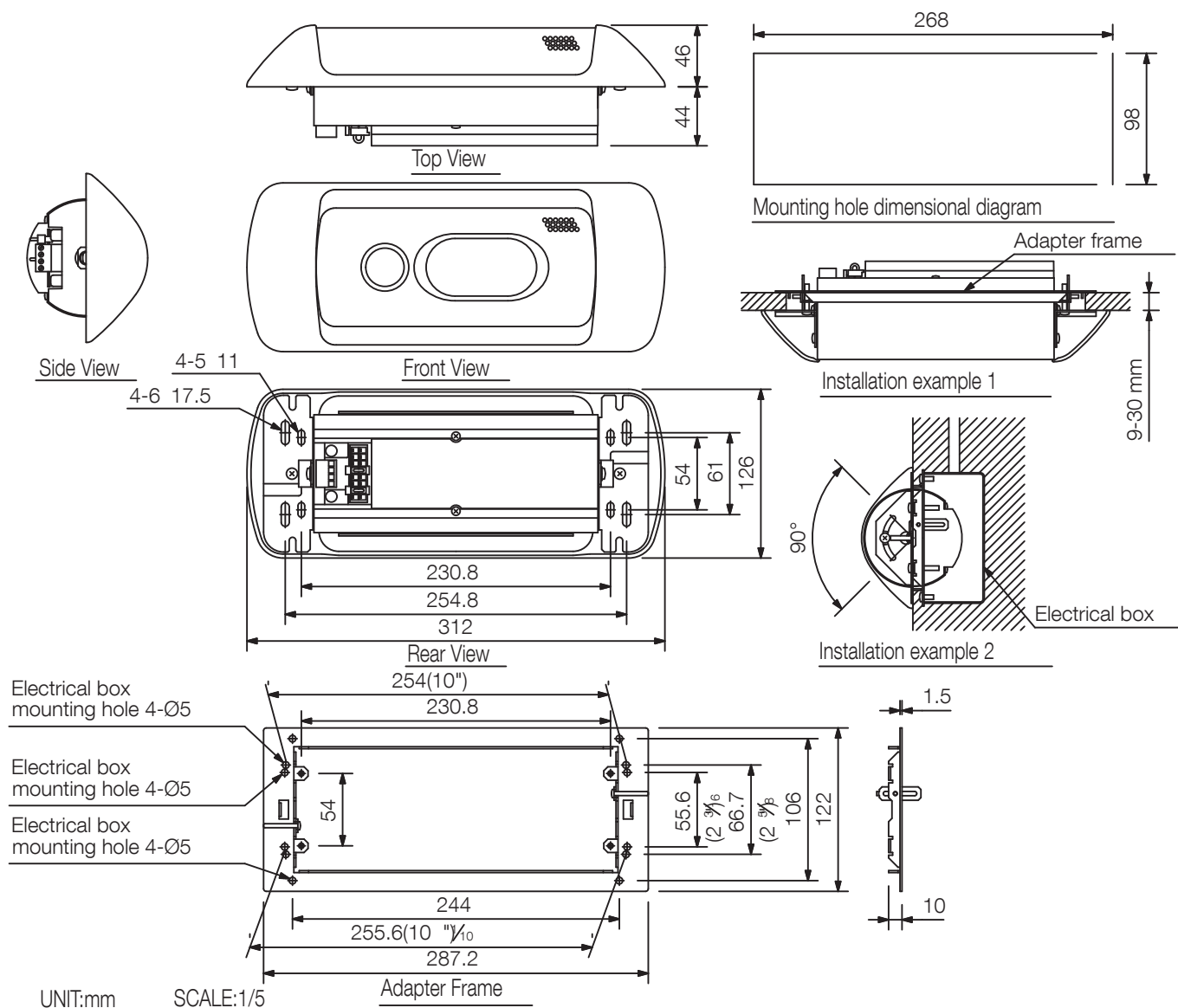
Specifications

Enclosure	Sealed type
Rated Input	12 W (16 Ω , high impedance)
Power Handling	90 W (continuous program/4 Ω) 30 W (continuous pink noise/4 Ω)
Rated Impedance	4 Ω , 16 Ω 100 V line: 830 Ω (12 W), 1.7 k Ω (6 W), 3.3 k Ω (3 W) 70 V line: 420 Ω (12 W), 830 Ω (6 W), 1.7 k Ω (3 W), 3.3 k Ω (1.5 W)
Sound Pressure Level	85 dB (1 W, 1 m) at installation in 1/2 free sound field (Measured by installing the unit in the center of a wall.)
Frequency Response	120 - 20,000 Hz
Speaker Component	Low frequency: 8 cm x 5 cm cone-type High frequency: Balanced dome-type
Input Terminal	Detachable screw terminal, (+)/(-) 2 each (for bridging connection)
Cable Requirements	Solid cable, stranded cable: 0.2 - 2.5 mm ² (AWG No. 24 - 14 equivalent)
Finish	Cover: Fire-resistant ABS resin, white, paint Punched net: Steel plate, white, paint Adapter frame: Stainless steel
Dimensions	312 (W) x 126 (H) x 90 (D) mm
Weight	1.5 kg (including adapter frame)
Included Accessories	Adapter frame1, Mounting screw (M4 x 25)4, Hole pattern paper1

When installing, mount the Adapter Frame as an electrical box cover. (The Adapter Frame is also available as an optional accessory under the model number of HY-H1.)

It is also possible to mount the speaker directly to the electrical box (without a cover).

Dimensions



A&E specifications

The loudspeaker shall be a two-way, sealed enclosure suitable for wall or ceiling mounting with an external appearance that is aesthetically pleasing and blends well with surrounding building architecture and fixtures. Loudspeakers requiring visible external mounting brackets shall not be acceptable. The loudspeaker shall utilize high quality components. The high frequency component shall be a 1" balanced dome tweeter, Ferrofluid-cooled for high power handling, The low frequency component shall be a 3" x 2" cone woofer with Neodymium magnet for improved low frequency response. The speaker shall employ a high quality internal passive crossover circuit with optimized filter slopes and a crossover frequency of 5k Hz. The loudspeaker shall have a smooth frequency response from 120 to 20k Hz. The output sound pressure level at a distance of 1 m with 1 W of input power applied shall be 85 dB SPL. The rated power handling (Continuous Program) shall be 90 W (4 ohms) and 12 W with matching transformer. The loudspeaker shall be compatible with low and high impedance speaker systems and shall include a built-in 70.7/100 V matching transformer with the following selectable tap settings: 12 W, 6 W, 3 W, 1.5 W (70.7 V) and 12 W, 6 W, 3 W (100 V). The speaker shall also have selectable impedance settings of 4 ohms and 16 ohms. The loudspeaker shall include a removable terminal block connector, screw terminal type, with loop-through terminations and accept AWG #14 - #24. An internal protection circuit shall prevent damage to components in an overload condition. Once activated, the circuit shall reduce the input signal and reset automatically after approximately thirty seconds once overload condition is removed. The loudspeaker grille material shall be rolled steel plate with a paintable white finish. The loudspeaker trim piece shall be constructed of fire-resistant ABS resin with a paintable white finish. The loudspeaker grille frame shall be fire-resistant ABS resin with a paintable white finish. Dimensions shall be 12.28" x 4.96" x 3.54" (312 x 126 x 90 mm). The speaker shall weight 3.31 lbs. (1.5 kg).

The loudspeaker shall be TOA model H-1.