

HY-1500HB

MOUNTING BRACKET



HY-1500HB

The HY-1500HB Mount Bracket is designed to mount speaker system to a wall or ceiling in a horizontal configuration. It allows the speaker orientation angle to be adjusted from 15° upward to 60° downward when mounted on a wall, and from 0° (horizontal) to 90° downward when mounted to a ceiling.

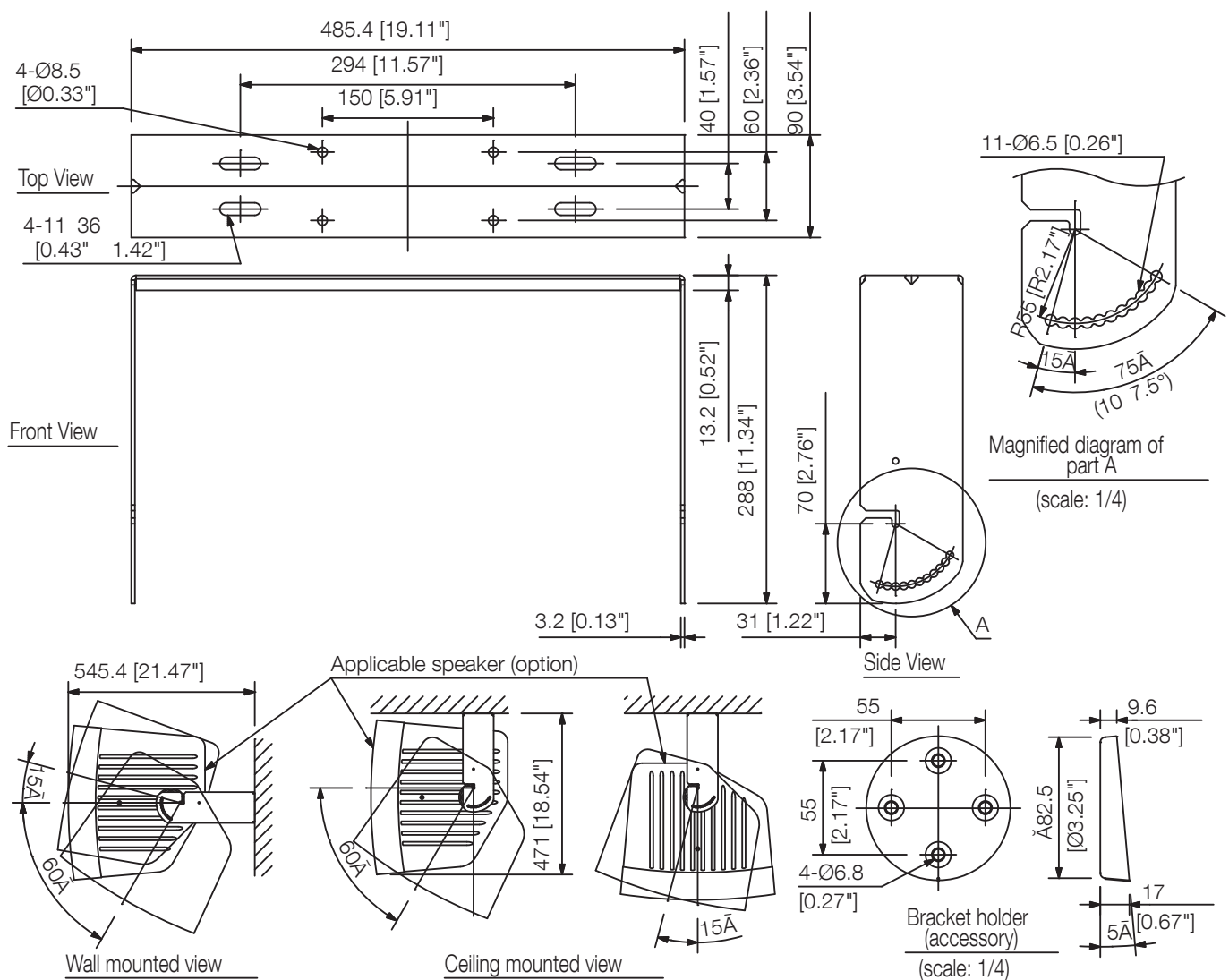
Key features

- HS-150B / HS-1500BT
- Horizontal orientation

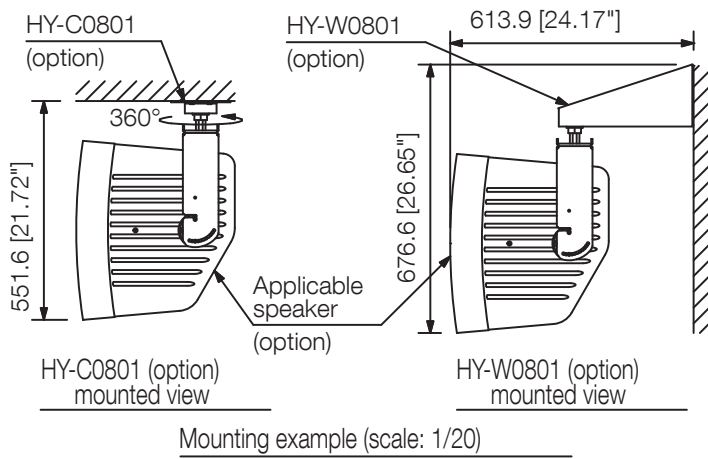
Specifications

Compatible Speaker	HS-150B, HS-1500BT
Finish	Steel plate, black, paint
Dimensions	485.4 (W) x 288 (H) x 90 (D) mm (19.11 x 11.34" x 3.54")
Weight	2.4 kg (5.29 lb)
Included Accessories	Bracket holder ...2, Bracket holder mounting screw ...4, Speaker mounting screw ...4, Nut for the optional bracket ...4, Washer for the optional bracket ...4
Optional Accessories	Ceiling mount bracket: HY-C0801, Wall mount bracket: HY-W0801

Dimensions

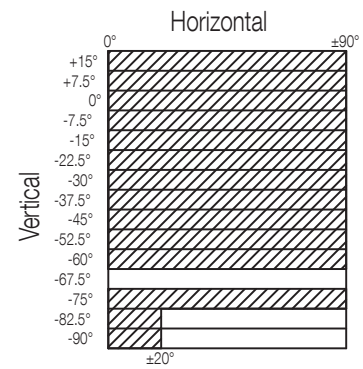


Dimensions



UNIT:mm

SCALE:1/6



Horizontal angle adjustment range of
the HY-1500HB + HY-W0801 (shaded areas)

A&E specifications

UNDEFINED TEXT