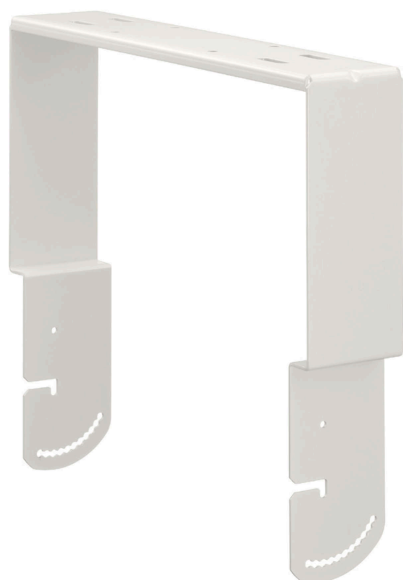


HY-1500VW

MOUNTING BRACKET



HY-1500VW

The HY-1500VW Mount Bracket is designed to mount speaker system to a wall or ceiling in a vertical configuration. It allows the speaker orientation angle to be adjusted from 15° upward to 60° downward when mounted on a wall, and from 15° upward to 90° downward when mounted to a ceiling.

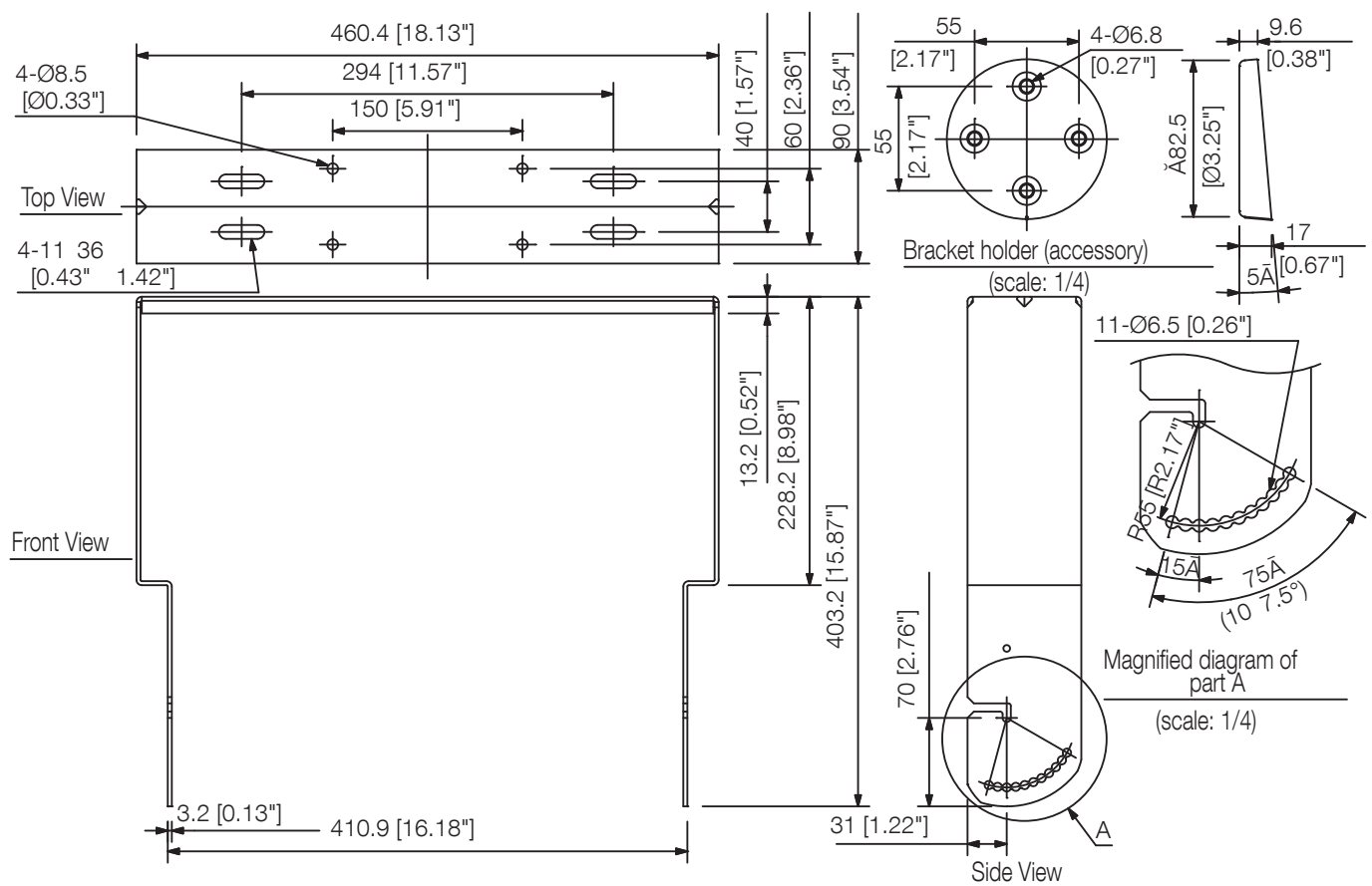
Key features

- HS-150W / HS-1500WT
- Vertical orientation

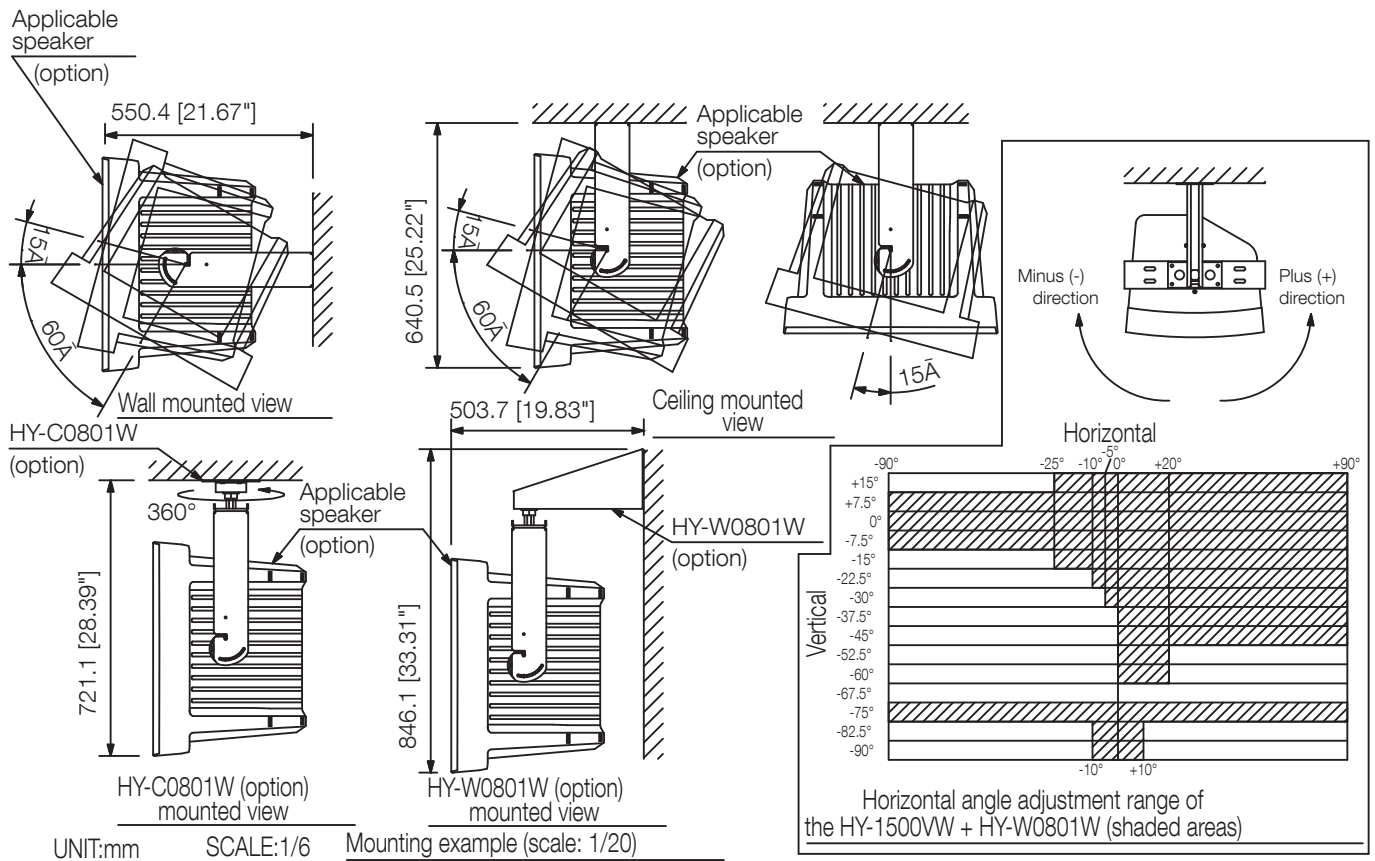
Specifications

Compatible Speaker	HS-150W, HS-1500WT
Finish	Steel plate, white, paint
Dimensions	460.4 (W) x 403.2 (H) x 90 (D) mm (18.13 x 15.87" x 3.54")
Weight	3 kg (6.61 lb)
Included Accessories	Bracket holder ...2, Bracket holder mounting screw ...4, Speaker mounting screw ...4, Nut for the optional bracket ...4, Washer for the optional bracket ...4
Optional Accessories	Ceiling mount bracket: HY-C0801W, Wall mount bracket: HY-W0801W

Dimensions



Dimensions



A&E specifications

UNDEFINED TEXT