

HY-CM20W

CEILING MOUNT BRACKET



The HY-CM20W Ceiling Mounting Bracket is used to mount F-2000 Series speakers to a ceiling in a horizontal configuration.

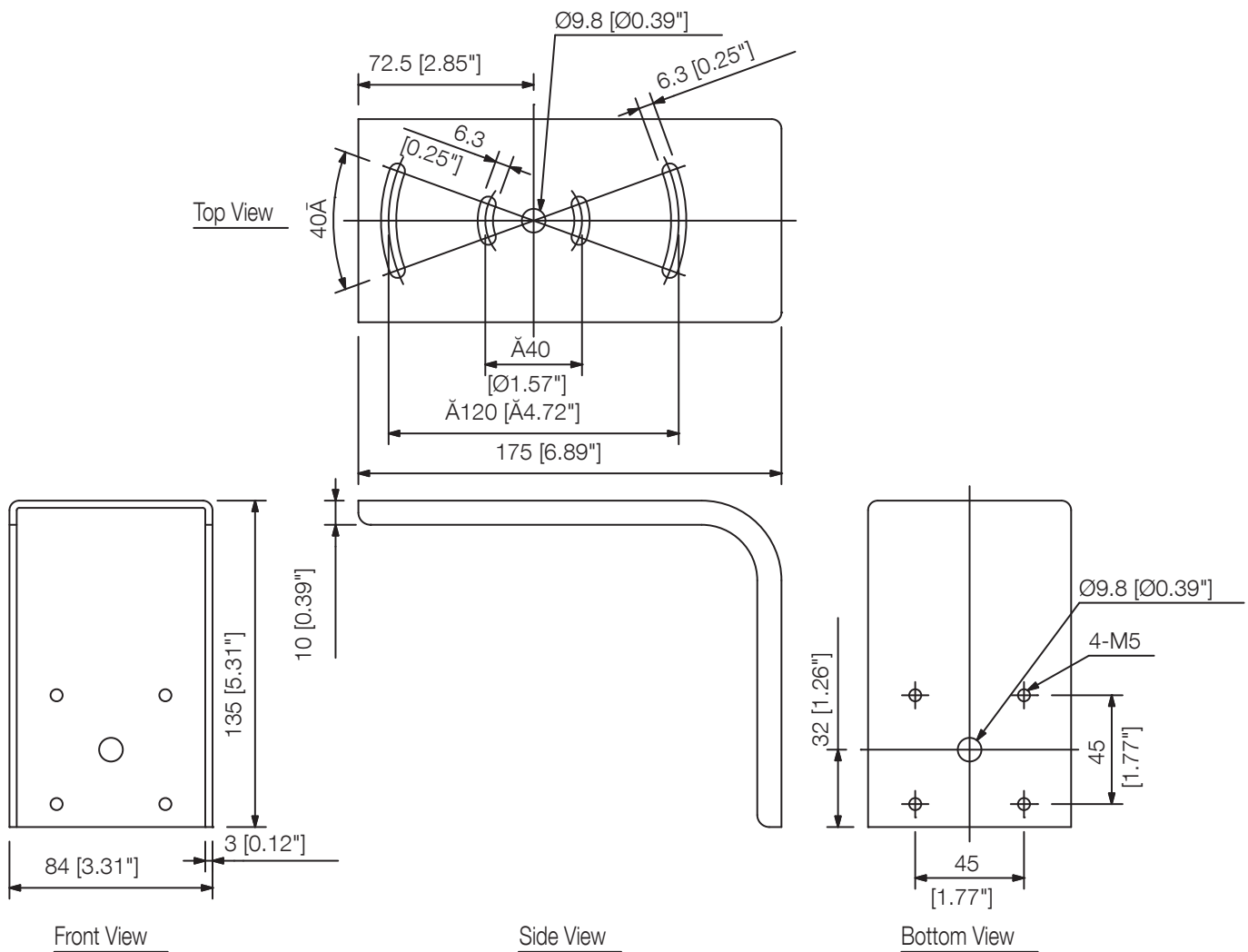
Key features

Specifications

Finish	Steel plate, white, paint
Dimensions	84 (W) x 135 (H) x 175 (D) mm (3.31 x 5.31" x 6.89")
Weight	610 g (1.34 lb)
Included Accessories	Speaker mounting bracket (with washer) ...4

Note: Bolts and nuts for mounting the bracket to the ceiling are not included.
Prepare them separately.

Dimensions



Dimensions

