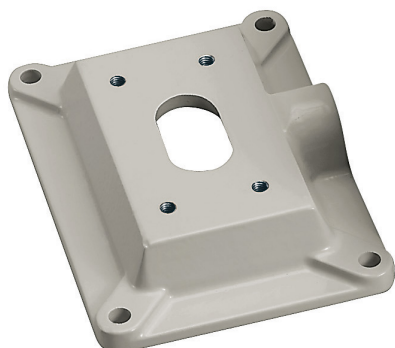


SHB-V-WCPA

Pole Mount Adapter



DESCRIPTION

Die-cast aluminum reinforcing support plate, suitable for SHB-V-3200HPR housing. Allows for internal cable management. Plate also provides reinforcing support for poorly consistency walls. Epoxy-polyester powder painted.

TECHNICAL DATA

MECHANICAL

Made of aluminium

Load rating: 50kg (110lb)

Unit weight: 0.6kg (1.3lb)

TECHNICAL DRAWINGS

The indicated measurements are expressed in millimetres.

