

TH-650

REFLEX HORN



The TH-650 is a speaker horn to be used in combination with an optional driver unit. Its powder-coated finish, and stainless steel screws ensure the unit's weatherproof capability.

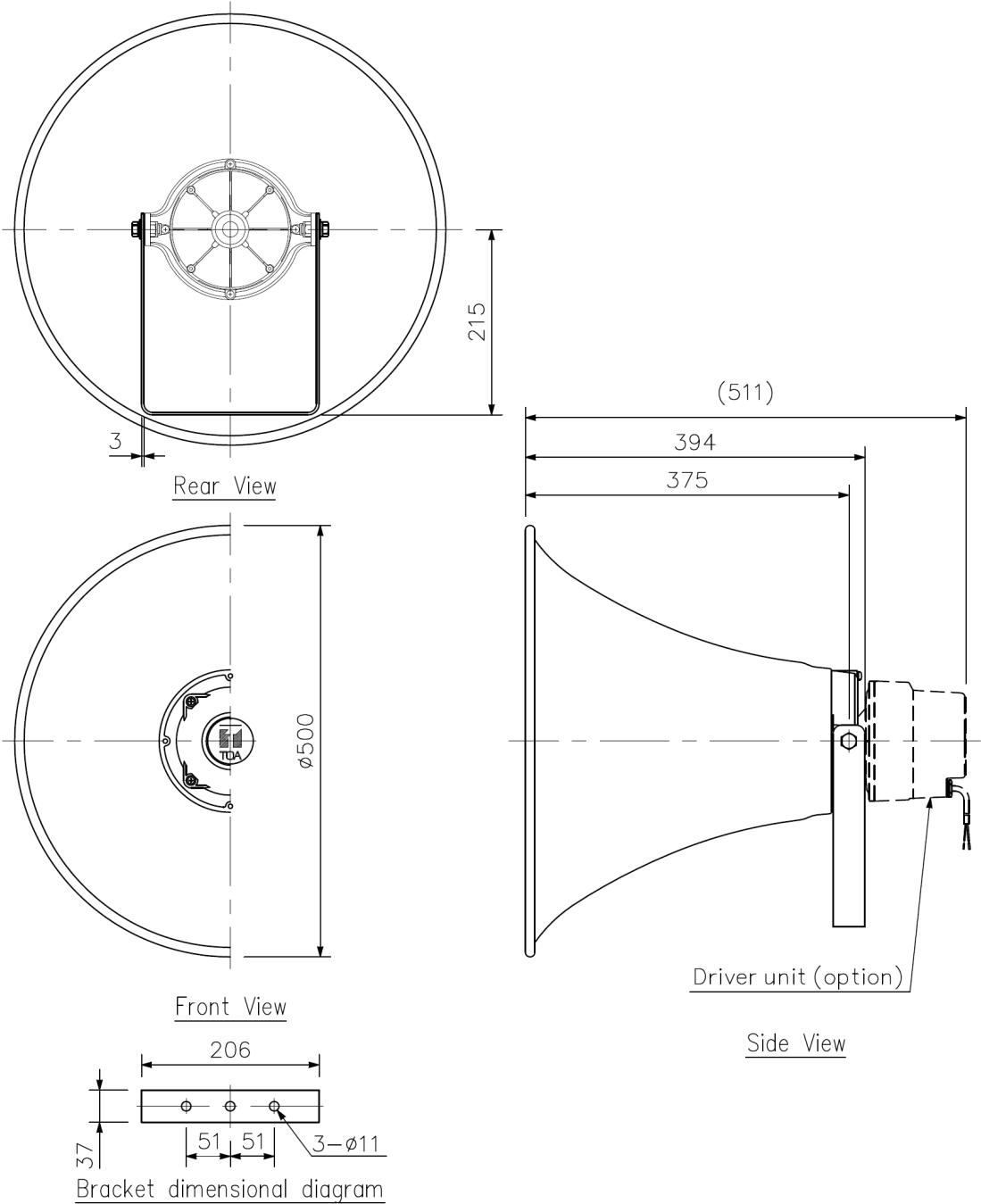
Key features

- Weatherproof construction for outdoor use
- Durable construction provides reliable operation over a long time
- Round shape ensures high speech clarity and sound quality and symmetrical sound dispersion - also suitable for music reproduction
- Shock-resistant
- Aluminium horn with durable powder coating
- For use with drivers TU-631, TU-651 or TU-631M / TU-651M (optional)

Specifications

Compatible Driver	TU-631, TU-631M, TU-651, TU-651M
Driver Coupling	1 - 3/8 18 threads (inch screw)
Sound Pressure Level	110 dB (1 W, 1 m) (When operated with a driver.)
Frequency Response	200 Hz - 6 kHz (When operated with a driver.)
Dust/Water Protection	IP65 (When operated with a driver.)
Operating Temperature	-20 # to +55 # (must be free from dew condensation)
Finish	Horn flare and flange: Aluminum, off-white, powder coating Reflector horn: ABS resin, off-white Bracket holder: Aluminum, gray, powder coating Bracket: Steel, gray, powder coating Screws and bolts: Stainless steel
Dimensions	#500 x 394 (D) mm
Weight	2.9 kg

Dimensions



UNIT:mm

Note: Numerical values in parentheses are for reference only.