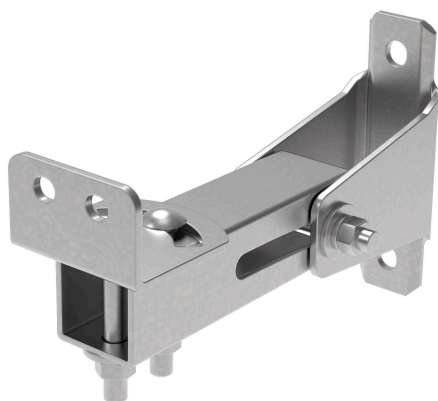


## YS-1100A

### SPEAKER MOUNTING BRACKET



This is a bracket for attaching the HA series Long range array speaker to a wall. The speaker can be adjusted from  $-45^{\circ}$  to  $+45^{\circ}$  to the left and right. This bracket comes in one set of 2 pieces.

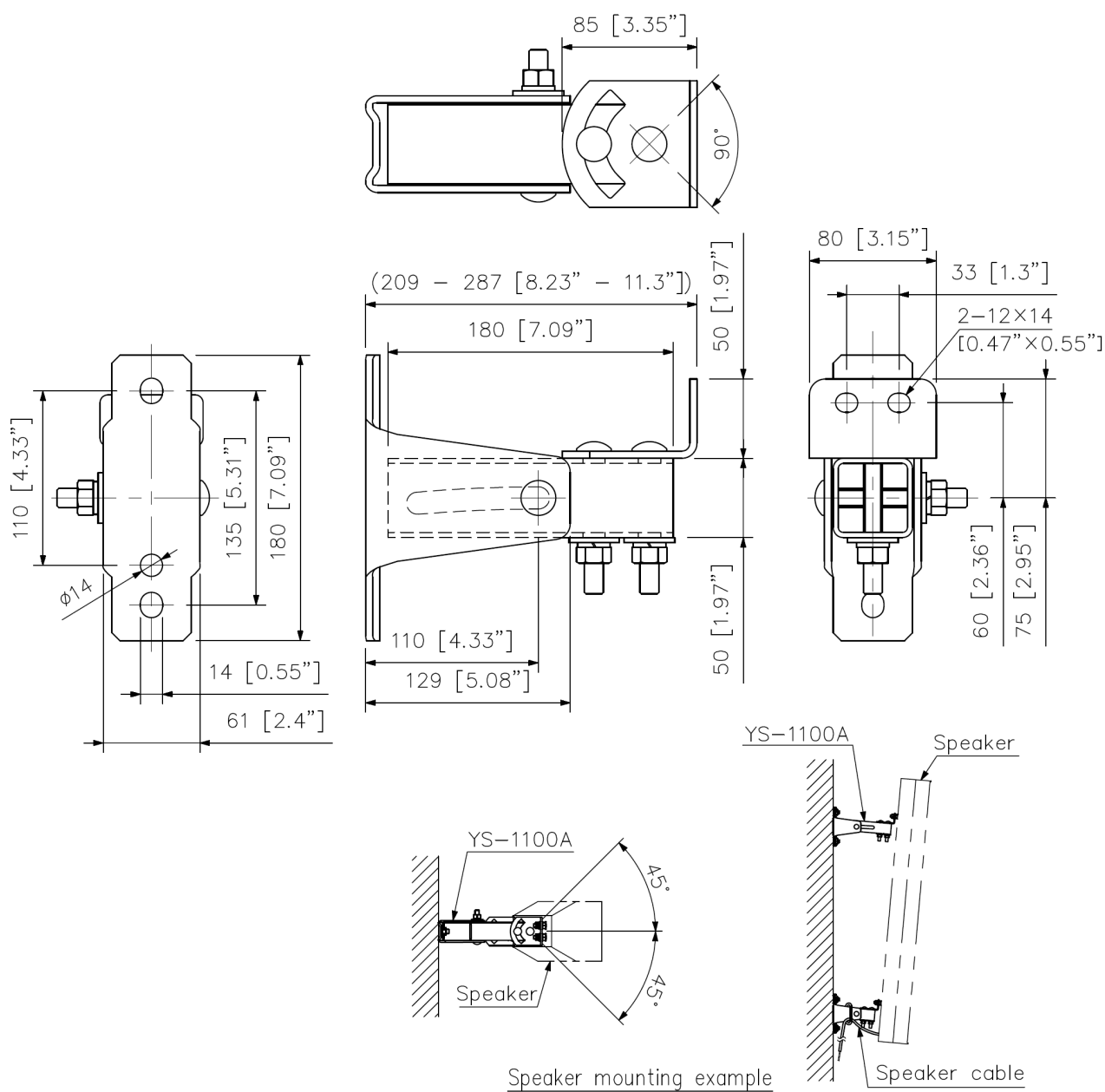
### Key features

## Specifications

Adjustable Angle Range	Horizontal: -45° to +45°
Compatible Speaker	HA-1030EN, HA-1060EN, HA-2120EN, HA-2240EN
Finish	Fixture: STKR400 t3.2HZA(*1), SS400 t4.5 HZA(*1) Bolt: SWRCH HZA(*1)
Weight	2.4 kg (5.29 lb) (per piece)

(\*1) Hot-dip zinc-aluminium alloy galvanized coatings.

## Dimensions



UNIT: mm

Note: Numerical values in parentheses are for reference only.