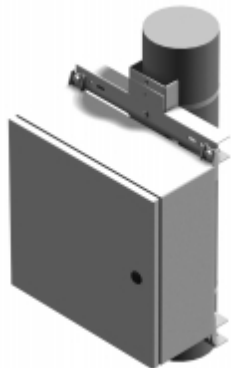




Quality Products. Service Excellence.

Pole Mounting Kit *PMK Series*

Junction and Wallmount Style - Steel



Features

- Designed to mount outdoor rated enclosures - Hammond **1414N4**, **Eclipse**, **Eclipse Junior**, **HWHK**, and **1418N4**.
- Individual components allow users to choose the mounting configuration and/or components to purchase
 - Note: Eclipse Series enclosures require the use of an external **Eclipse Mounting Foot Kit** (sold separately)
- This pole mount kit is a 2 or 3-part system.

Choose Vertical Channel:

- The vertical channel can be lagged directly to a pole or attached using optional stainless steel straps
- A vertical channel prevents the enclosure from twisting. Can be used on pole diameters from 4" and up

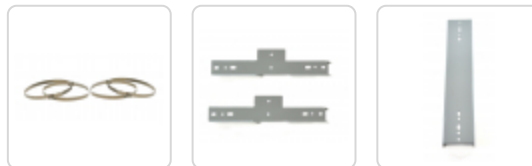
Choose Horizontal Channel:

- Horizontal steel channels (sold in pairs) come with all hardware needed to secure the enclosure

Choose Straps (Optional):

- Stainless steel straps are sold separately in quantities of four (4)
 - **PMSTRAP40** straps are rated for 450 lbs each and can be used for pole diameters up to 11"
 - **PMSTRAP55** straps are rated for 250 lbs each and can be used for pole diameters up to 16"

Gallery



Vertical Channel

| Part No. | Description | Use with Hammond Series | | | |
|-----------|--------------------------------|-------------------------|---------------------|---------------------|---------------------|
| | | 1414N4 | Eclipse Junior (EJ) | 1418N4/HWHK | Eclipse (EN4SD) |
| PMV1216GY | Qty 1 - Vertical Steel Channel | 12"-16" encl height | 12"-16" encl height | 12"-16" encl height | 12"-16" encl height |
| PMV2024GY | Qty 1 - Vertical Steel Channel | - | - | 20"-24" encl height | 20"-24" encl height |
| PMV3036GY | Qty 1 - Vertical Steel Channel | - | - | 30"-36" encl height | 30"-36" encl height |
| PMV4248GY | Qty 1 - Vertical Steel Channel | - | - | 42"-48" encl height | 42"-48" encl height |

Horizontal Channel

| Part No. | Description | Use with Hammond Series | | | |
|----------|----------------------------------|-------------------------|---------------------|--------------------|--------------------|
| | | 1414N4 | Eclipse Junior (EJ) | 1418N4/HWHK | Eclipse (EN4SD) |
| PMH15GY | Qty 2 - Horizontal Steel Channel | 12"-16" encl width | 12"-16" encl width | 12"-20" encl width | 12"-16" encl width |
| PMH25GY | Qty 2 - Horizontal Steel Channel | - | - | 24"-30" encl width | 20"-24" encl width |
| PMH35GY | Qty 2 - Horizontal Steel Channel | - | - | 36" encl width | 30"-36" encl width |

Stainless Steel Straps

| Part No. | Description |
|-----------|--|
| PMSTRAP40 | Qty 4 - 0.50" x 39" length 316 stainless strap, supports up to 450 lbs, pole diameters up to 11" |
| PMSTRAP55 | Qty 4 - 0.31" x 55" length 316 stainless strap, supports up to 250 lbs, pole diameters up to 16" |

Tags: **stainless steel, steel strap, pole strap, pole mounting, vertical channel, horizontal channel, eclipse, EJ, 1418N4, HWHK, 1414N4, pole mounted electrical box**

Data subject to change without notice

© 2026. Hammond Manufacturing Ltd. All rights reserved.